

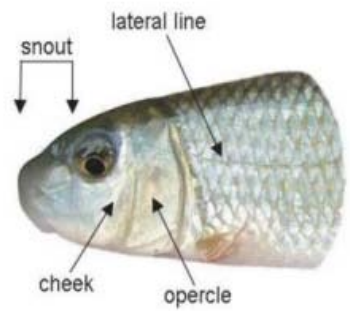
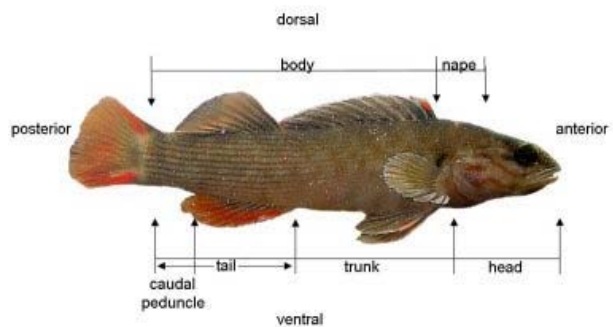
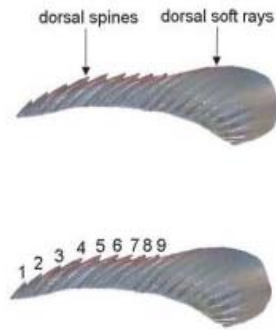
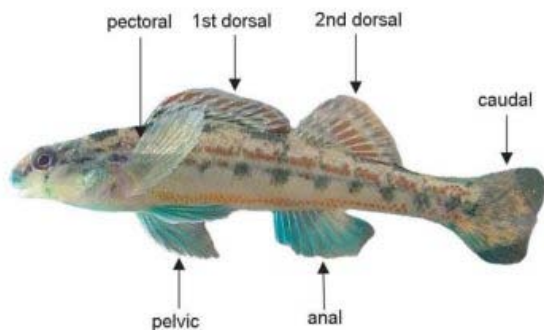


Biological Indicators of Watershed Health

- Biological Integrity
- Indicator Species
- Key Concepts
- Bioassessment Programs
- Publications
- Aquatic Biodiversity
- Statistical Primer
- Coral Biocriteria

Fish Anatomy

A rudimentary understanding of basic anatomy is essential for accurately identifying fish in the field. The majority of species are readily identifiable through mouth orientation, finnage and coloration. Where subspecies and hybrids are present, a qualified professional may be needed.



inferior



terminal



superior (moderately)

[Biological Indicators](#) | [Aquatic Biodiversity](#) | [Statistical Primer](#)

[EPA Home](#) | [Privacy and Security Notice](#) | [Contact Us](#)

Last updated on Tuesday, October 10th, 2006

URL:

<http://C%3A/Users/Lisa%2520Tack/Documents/ENVIROTHON/Envirothon%2520MFA/Envirothon%25202009/Resources%2520Guides/Aquatics/Aquatics%2520Binder/binder/fishanat.htm>